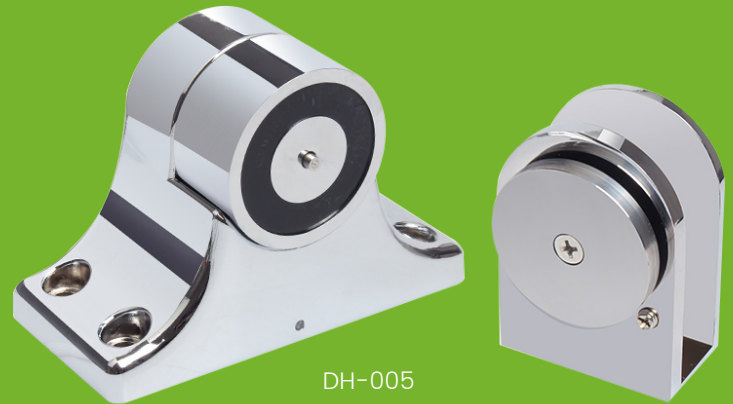


Magnetic Door Holder For Glass Door



DH-005

Work with all Kind of Single & Double Smokeproof Doors

Magnetic door holders are used in fire protection doors. These holders keep the doors open during day to day operations. When smoke is detected the fire alarm transmit a signal which cuts off the power feed and the mechanism releases the door. This avoids fire and smoke expansion.

Specifications

Dimensions	118x80x55mm	Suitable for	All Kind of Single & Double Smokeproof Doors
Holding Force	60kg(110Lbs)	Surface Temp	<=20 C
Voltage	12V (24V customized)	Operating Temp	-10 C ~55 C (14°F-131°F)
Current Draw	12V/160mA 24V/80mA	Suitable Humidity	0-90%(relative humidity)

Dimensions

